

# Golidi

Mufanisi: Catherine Groenewald

Tekeleriwile ku suka eka mintsheketo ya  
le Scandinavia

**Kotara 2 – Buku Leyikulu 5**



Xitsonga

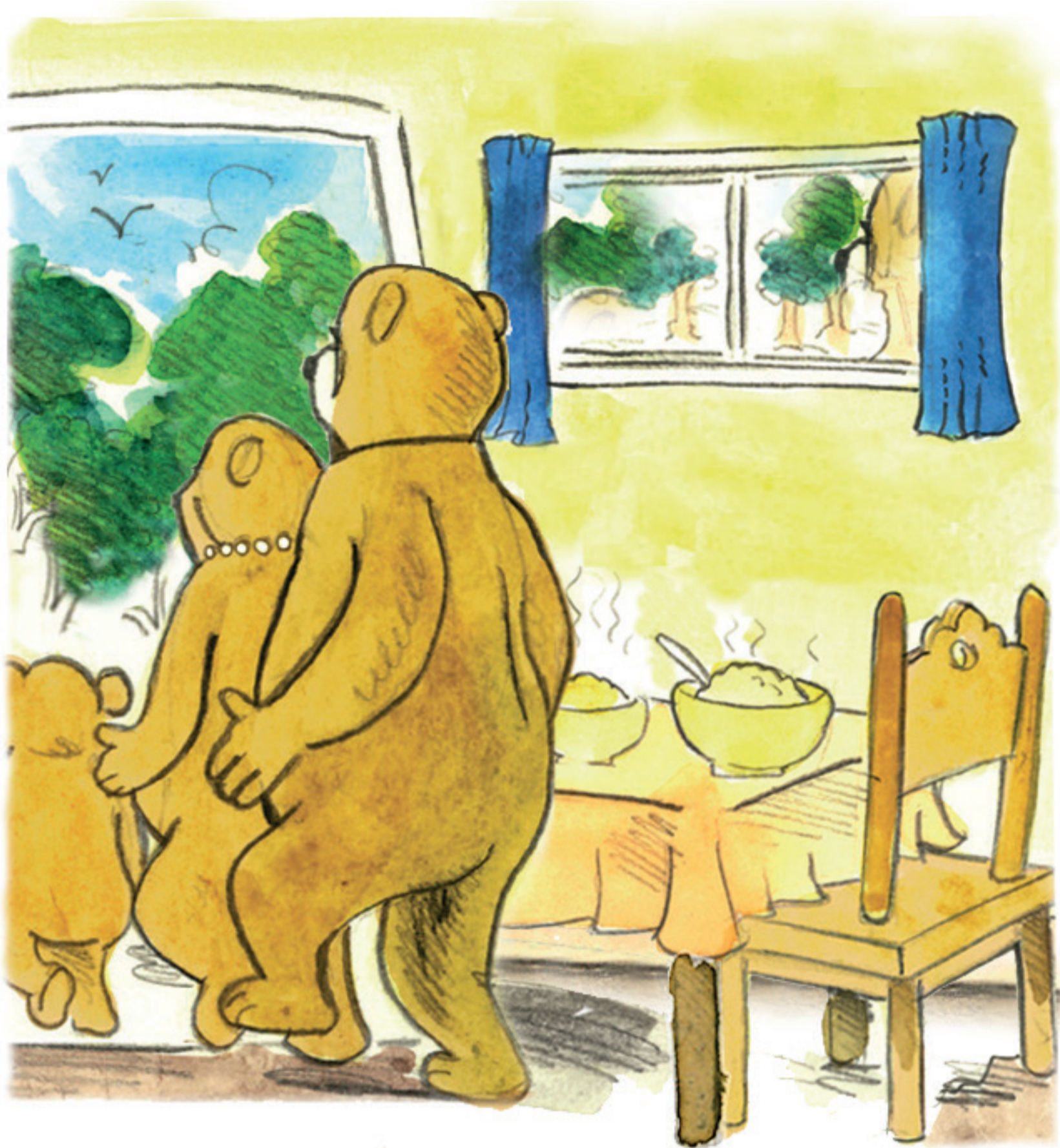


**GAUTENG PROVINCE**  
EDUCATION  
REPUBLIC OF SOUTH AFRICA

**GGT 2030**  
GROWING GAUTENG TOGETHER



Khale ka khaleni a ku ri na  
tibere tinharhu: Tatana  
Bere, Manana Bere na  
Xiberana. A va tshama  
exiyindlwanini ekhwatini.



Mixo wun'wana Tatana Bere  
u te, "Mukapu wa hina wa ha  
hisa swinene. A hi tiololeni  
loko wa ha hola."



Golidi na yena a karhi a tiolola.  
U vonile yindlu ya tibere.  
U gongondzile, u pfurile  
nyangwa kutani a nghena!



Golidi u ringile mikapu  
hinkwayo. U etlerile  
emibedweni hinkwayo.  
“Ndzi tsakela mubedo lowu,”  
a vula. “Wo va kahle,” kutani  
Golidi a ya etlela.

Tibere tinharhu ti vuyile ekaya.



“I mani loyi a dya mukapu wa hina?” ti vutisa hi ku hlundzuka.

“I mani loyi a etlela emibedweni ya hina?” ku vula Xiberana.



“Hi luya lahaya!”



Golidi a chuhile swinene!  
U tlurile a huma emubedweni  
wa Xiberana kutani a  
tsutsuma hi rivilo hi laha a  
nga kota ha kona! Tibere a ta  
ha n'wi vonanga nakambe.

d

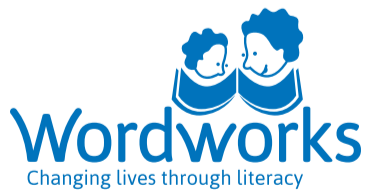


c



**USAID**  
FROM THE AMERICAN PEOPLE

**ZENEX**  
FOUNDATION



Buku Leyikulu yi tumbuluxiwile hi Wordworks. Yi khavisiwa hi Jacqui Botha.  
Yi hundzuluxiwile yi va hi Xitsonga hi Sibongile Usinga.  
Yi hleriwile hi Vutivi Shirinda na Bongani Maluleke.

Buku Leyikulu yi na mpfumelelo ehansi ka Creative Commons Attribution 4.0 License (<http://creativecommons.org/licenses/by/4.0/>).

